

## OVERVIEW

The **Loner Mobile app** lets you automate employee check-ins on your smartphone. In an emergency, monitoring personnel can pinpoint your location and can quickly respond.

**SOS Button** is a wearable device that pairs with Loner Mobile to trigger an SOS alert or confirm a pending alarm.

Paired via low-power Bluetooth®, Loner Mobile and the SOS Button offer an alternative to a lone worker monitoring device.

## GETTING STARTED

### DOWNLOAD THE LONER MOBILE APP

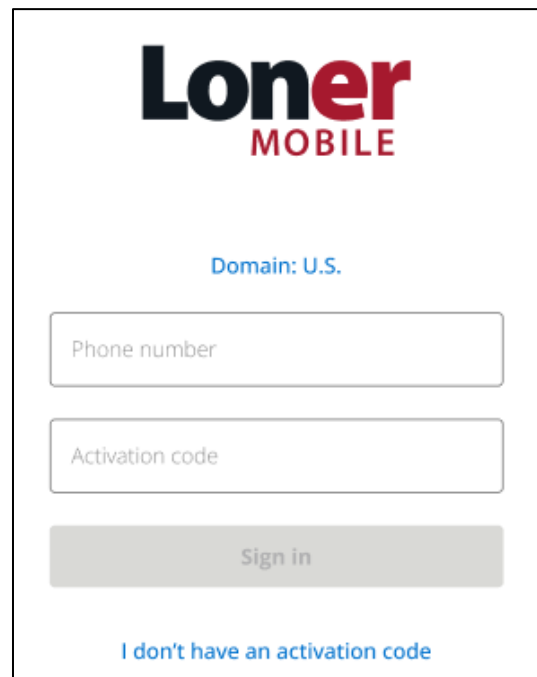


### INITIAL SIGN-IN

1. Specify your domain (U.S. or EU).
2. Enter your phone number to receive a text message with your activation code.
3. Enter activation code, then select **Sign in**.

If you don't receive an activation code, contact your administrator or Blackline Technical Support.

**NOTE:** Loner Mobile requires a data connection, either through a mobile data plan or Wi-Fi.

A screenshot of the Loner Mobile app's initial sign-in screen. At the top is the "Loner MOBILE" logo. Below it, the text "Domain: U.S." is displayed in blue. There are two input fields: "Phone number" and "Activation code". Below these fields is a grey "Sign in" button. At the bottom, there is a blue link that says "I don't have an activation code".

**Loner**  
MOBILE

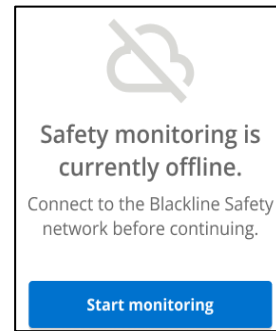
Domain: U.S.

  
  
  
[I don't have an activation code](#)

## START MONITORING

To connect Loner Mobile to the Blackline Safety Network and start monitoring:

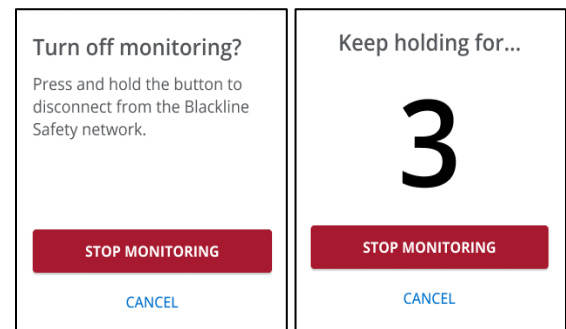
1. Tap the power icon or green banner.
2. Tap **Start monitoring**. Loner Mobile connects to the Blackline Safety Network.



## STOP MONITORING

To disconnect Loner Mobile from the Blackline Safety Network and stop monitoring:

1. Tap the power icon.
2. Tap and hold **Stop monitoring** for three seconds. Loner Mobile logs off the Blackline Safety Network.



**NOTE:** Some configuration changes in Settings may require you to turn off monitoring *first*.

## MENU BAR

Loner Mobile's menu bar provides quick access to key functions. The appearance varies slightly between iOS and Android versions, but the layout and functions are identical.




### iOS



### ANDROID



## MENU OPTIONS

	<b>Bluetooth Device Battery Level</b> Displays battery level for paired Bluetooth devices
	<b>Power &amp; Monitoring Status</b> Start/Stop monitoring
	<b>Settings</b> Configure app settings

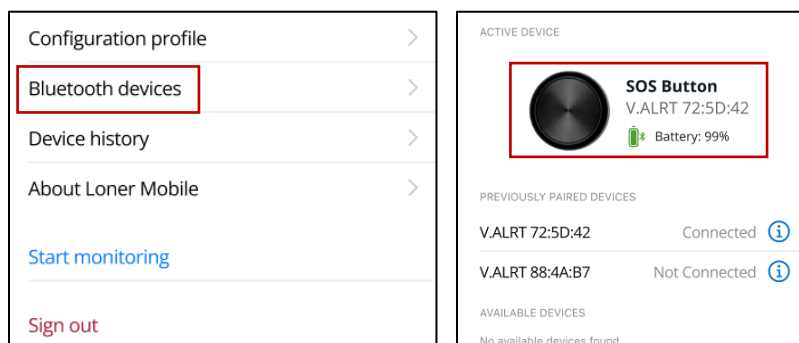
## PAIRING AN SOS BUTTON

Before pairing, ensure the following:

- Bluetooth is enabled on your phone.
- SOS Button is powered on.
- Monitoring is turned OFF in Loner Mobile (required to add Bluetooth accessories).

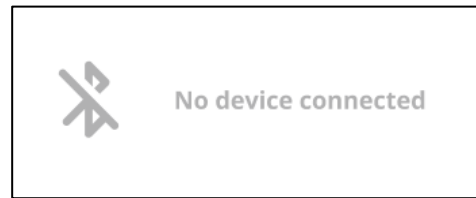
### To pair SOS Button with Loner Mobile:

1. Tap **Settings**.
2. Select **Bluetooth devices**.
3. Tap **Scan** to search for SOS Button.
4. Select your SOS Button from the list of active devices to complete pairing.



Once connected, the **Bluetooth Device Battery Level** icon displays.

Keep your SOS Button and smartphone within five meters of each other. If the connection is lost, Loner Mobile displays a grey Bluetooth icon and a lost connection notification.



## KEY FEATURES

### CHECK-IN TIMER

The check-in timer counts down and displays the time remaining until your next check-in.

When a check-in is required, a pending alarm sounds. If you don't confirm within 30 seconds, a red alert is sent to monitoring personnel.

#### To confirm you're OK:

1. Tap **OK** or press the SOS Button once.

#### To check in early and reset your timer:

1. Tap **Check-in** from the main screen.

### Customizing the check-in timer

You can customize the timer if your Loner Mobile account has configuration permissions.

1. Tap **Start timer** if the timer is disabled or **Change timer** if a timer is already running.
2. Enter your countdown period, then select repeat options under **Repeat**.

On **iOS**, use the scroll wheel selector.

On **Android**, enter the time manually or tap the clock icon.

**Timer repeat options**

Option	How it works
Never	Counts down once, then asks for check-in before turning off
Once	Counts down, asks for check-in, repeats once, then turns off
Twice	Counts down, asks for check-in, repeats twice, then turns off
Until Turned Off	Counts down, asks for check-in, repeats until manually turned off
Until Specified Time	Counts down, asks for check-in, repeats until set time, then turns off

**SOS FEATURES****SOS Slider**

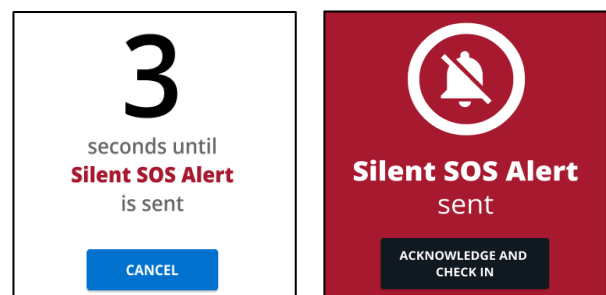
The **SOS Slider** allows you to contact monitoring personnel in an emergency by sending one of two types of SOS alerts:

**SOS Alert (sound enabled)**

1. Slide **SOS Slider** to the right.  
This initiates a three-second countdown before the SOS Alert is sent. A confirmation message displays with the option to **Acknowledge and check in**.

**Silent SOS Alert (sound and vibration disabled)**

1. Hold **SOS Slider** for three seconds to send a Silent SOS Alert.  
This initiates a three-second countdown before the Silent SOS Alert is sent.  
  
A confirmation message displays with the option to **Acknowledge and check in**.



**NOTE:** You can configure SOS Button to send *either* SOS Alerts or Silent SOS Alerts – not *both*. Check Loner Mobile's settings to see which option is enabled.